



Roadside tree planting through cooperative approach

Bangladesh- সমবায় ভিত্তিতে রাস্তার ধারে গাছ লাগানোর পদক্ষেপ

Participatory roadside plantation Approach promoted through the formation of a co-operative local organization (Club) for increasing income for local landless and unemployed youth.

In 2006, 100 landless and unemployed local young people formed a co-operative organization named *Khamar Raghunatpur-Islampur Village Development Club* at Ballanjhar union in Gaibandha Sadar Upazila under Gaibandha district. The main objective was to create an alternative income source for the club members through the establishment of roadside plantation by self-mobilization. They selected about 4 km long road in the both side of which they decided to establish the plantation. They started plantation program in the selected roadside after taking permission from the respective Thana and Union Parishad (since the ownership of road-side land belongs to Union Parishad). They bought 8000 seedlings of *Eucalyptus (Eucalyptus camaldulensis)* and planted in the selected site. Till today they are taking care of the plantation voluntarily. It can be mentioned here that they established the plantation without any financial or technical support from forest department or any other government or non-government organisation.

They will harvest timber after the maturity of the plantation (which is about 15-20 years) that will ensure the maximum benefit from the plantation. The profit will be divided as 70% to the users and 30% to the Union Council.

Participatory roadside plantation is a new approach in the locality which is becoming popular day by day mainly to the poor landless and economically disadvantaged groups, since there is no need of having own land and big investment to establish and maintain the planting. This is a self-mobilized approach where the people can improve their socio-economic condition with or without little support from government and non-government organisation.

left: roadside tree planters. (Md. Abul Hasnat Tuhin).

right: Planted trees along the both sides of road (Md. Abul Hasnat Tuhin).



Location: Gaibandha, northern part of Bangladesh, under the Tista meander flood plain (agroecological zone-2)

Approach area: <0.1km²

Land use type: Vegetative

Type of Approach: Local initiative

Focus: Earning income and use of local government fallow land

WOCAT database reference: QA BAN 12

Related technology (ies): QT BAN 15

Compiled by: Md. Abul Hasnat Tuhin, Institute of Forestry and Environmental Sciences, University of Chittagong, Bangladesh.

Date: 23.10.08

Reviewed and edited by: Shoaibju, and Khisa SK, BANCAT, Bangladesh

Problem, objectives and constraints

Problems

- Lack of technical knowledge.
- Lack of woman participation.
- Conflicts over recourse use.
- No support from NGO's.

Aims/Objectives

- The main aim of the Approach is to increase income to uplift the socio-economic condition of the involved poor landless and unemployed people.
- To utilize the roadside land.
- To reduce soil and wind erosion.
- To increase aesthetic value of the road.

Constraints addressed

Major	Constraint	Treatment
Technical	No guidance in terms of selection of suitable species, establishment and maintenance of the plantation etc.	Enhanced guidance and training by government line agencies and NGO's.
Institutional	Users took lease of the land from the local government and there exists conflicts between users and local government, and land user's rights may be unsecured in the long term and investment may not be encouraged.	The conflicts should be minimised by the local government & community through dialogue.
Financial	Shortage of fund	Arrangement of loan

Participation and decision making

Stakeholders / target groups



Land users, group

Approach costs met by:

	%
Local community/land users	100%
TOTAL	100%

Annual budget for SLM component: Taka 10,000-100,000

Decisions on choice of the Technology (ies): By land users alone (self-initiative/bottom up).

Decisions on method of implementing the Technology (ies): By land users alone (self-initiative/bottom up).

Approach designed by: Land users.

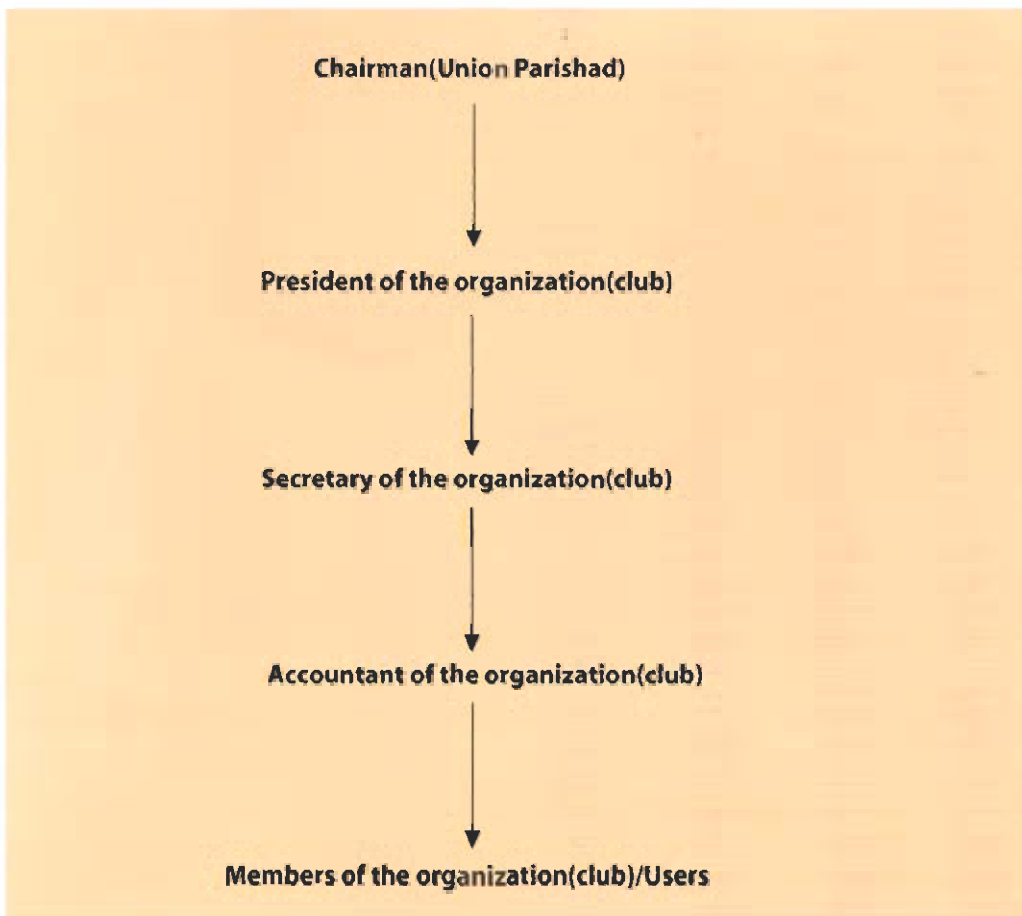
Implementing bodies: Local community/land users.

Land user involvement

Phase	Involvement	Activities
Initiation/motivation	Self-mobilization	Local poor landless and unemployment young peoples started the Approach of plantation program recently.
Planning	Self-mobilization	Local poor landless and unemployed young people formed a co-operative organization and started the Approach.
Implementation	Self-mobilization	The local club implemented the Approach.
Monitoring/evaluation	none	
Research	none	

Differences between participation of men and women: No participation of woman. For manual labour, men can do more work and they have greater technical knowledge and skills related to plantation than women.

Involvement of disadvantaged groups: Yes, greatly.



Extension and promotion

Training / awareness rising: No training was provided.

Advisory service: No advisory service was provided.

Research: No research was carried out.

Incentives

External material support / subsidies: None

Contribution per area (state/private sector): No external material support / subsidies were provided.

Labour: Voluntary.

Inputs: Agricultural (seedling), materials (bamboo stakes) and equipments (spade, hoe). Full cost was borne by users.

Credit: No

Support to local institutions: No

Monitoring and evaluation

Monitored aspects	Methods and indicators
Bio-physical	No data is available
Technical	No specific technical measurement/observation by land users.
Socio-cultural	No specific socio-cultural measurement/observation by land users.
Economic/production	Adhoc measurement by land users
Area treated	4 km roadside
No. of land users involved	Adhoc measurement, No. of land users involved
Management of Approach	Management of the Approach by the club.
Other	-

Changes as result of monitoring and evaluation: There is no monitoring and evolution to change in the approach.

Impacts of the Approach

Improved sustainable land management: Yes, greatly.

Adoption by other land users / projects/: Yes, many. Gaibandha district is situated in the northern part of Bangladesh, where over 50% of people are poor, landless and unemployed. Since this Approach involves low establishment and management cost, thus poor and disadvantaged groups are adopting the Approach day by day.

Improved livelihoods / human well-being: Yes, greatly.

Improved situation of disadvantaged groups: Yes, greatly.

Poverty alleviation: Yes, moderately in future.

Training, advisory service and research: There was no training, advisory service and research provided.

Land/water use rights: The ownership of the roadside land and its resources belong to local government. Land users can only take lease of the land for a period of time. The uncertainty over future user rights and possible reallocation of the land after few years (5, 10 or 20) in response to changes in population and household needs, additional investments into land management may be hindered.

Long-term impact of subsidies: No subsidies were used for the implementation of the Approach.

Concluding statements

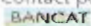
Main motivation of land users to implement SLM: Production, profitability.

Sustainability of activities: Yes, The Approach was established by self-mobilization and there was no financial support from government or NGO's, so, there is a prospect of sustainability.

Strengths and → how to sustain/improve	Weaknesses and → how to overcome
Easy to establish and maintain → More attention to establishment and maintenance	Lack of technical knowledge → Enhanced guidance and training by government and NGO's.
Require no own land and big investment → Community leasehold may be encouraged	No woman participation → Ensure woman participation for gender equity.
Landless and unemployed people can initiate the Approach → These groups of people may be organized with necessary policy and logistic support	Conflicts between users and local government → Local government should take steps in conflict resolution.

Key reference(s):

Contact person(s): Mr. Abul Hasnat Tuhin, Institute of Forestry and Environmental Science, University of Chittagong, Chittagong

 © 2009 BANCAT, Published by BANCAT.